

PRESENTS RESEARCH & MINING ACTIVITY KINGDOM OF MOROCCO



INDEX

INTRODUCTI
ON & BACK
GROUND

• **INTRODUCTION & BACKGROUND**

GEO-GRAPHY
&
DEMOGRAPH
Y

• **GEOGRAPHY & DEMOGRAPHY**

MINING &
PROCESSING

• **RESOURCES & RESERVE**

RESOURCE &
RESERVE

• **MINING & PROCESSING**

FINANCIAL
ANALYSIS

• **FINANCIAL ANALYSIS**

SOCIAL
IMPACT

• **SOCIAL IMPACT**

WAY
FORWARD

• **WAY FORWARD**

FUTURE
VISION

• **FURURE VISION**

INTRODUCTION & BACKGROUND

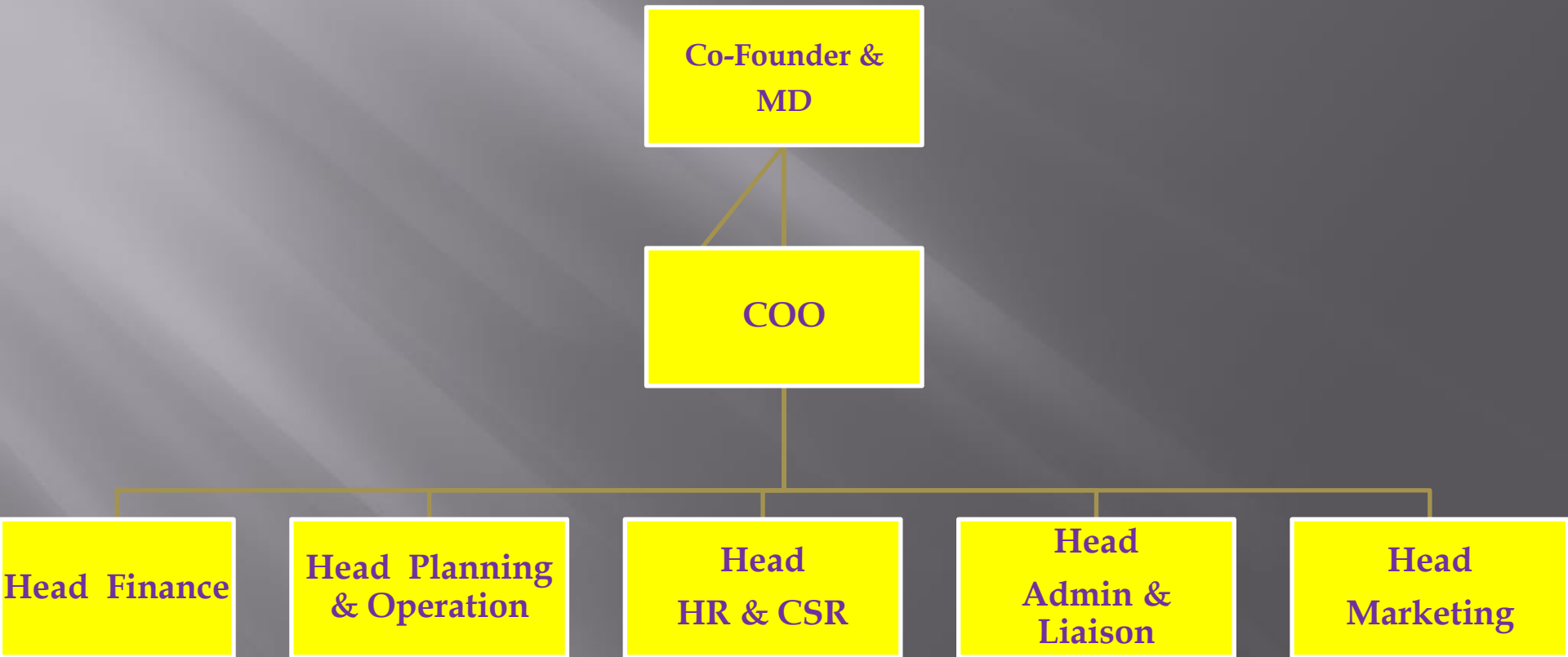


- Tirupati Mining Corporation s.a.r.l. ,a Moroccan based company incorporated in the year 2014, having its register office Siege Social: BLOC A8, No.-39; Cite Dakhla; Agadir,BP:628;Agadir PPAL state of Morocco .
- TMC involved in Exploration , Exploitation , Processing & Exporting of both Ferrous and Non-Ferrous mineral resources, **Group-2** Category
- The company has been granted three Mining permits ,having area of **16 Sq. km.** each, in the State of Morocco.
- The location of Iron Ore is Foum-jemaa, Azilal.
- The Location of Copper Ore is Keroul-1, Azilal .
- The Location of Lead Ore is Ait-Ouanergue, Imilchil.
- TMC & it's promoters involved in Mining & trading business all over the world having their corporate office India.

ORGANIZATION STRUCTURE



Mr. Yashpal Singh Dhama & Mr. Vineet Pawaria
(Co-Founder & MD)



Current Status at Glance.....

- The Investment done so far approximately 25,000,000 MAD (Twenty Five Million Moroccan Dirham) by TMC.
- TMC already secured all the necessary **licenses** and **permissions** to execute all these projects.
- A comprehensive research was done by a team of experts & professionals which transmitted in the form of a **feasibility report & Mining** .
- At present TMC focus on Iron Ore Mining and Processing and research work still continuing over Copper and Lead Permits.
- The Movable Reserve of iron ore be **5,00,000 Tons**. And a **Estimated Resource** of 5,000,000Tons.

Where we Stand...??

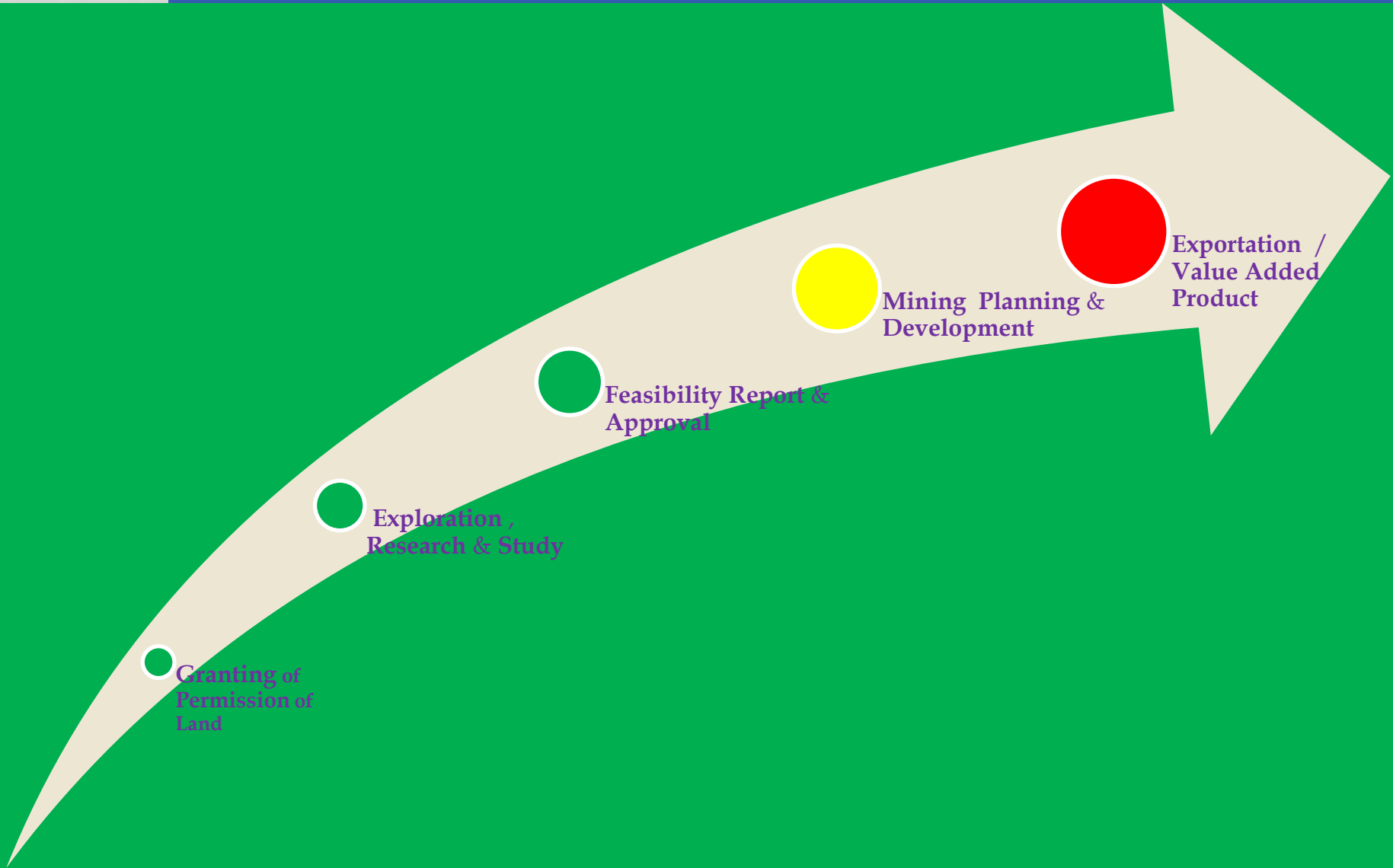
Granting of
Permission of
Land

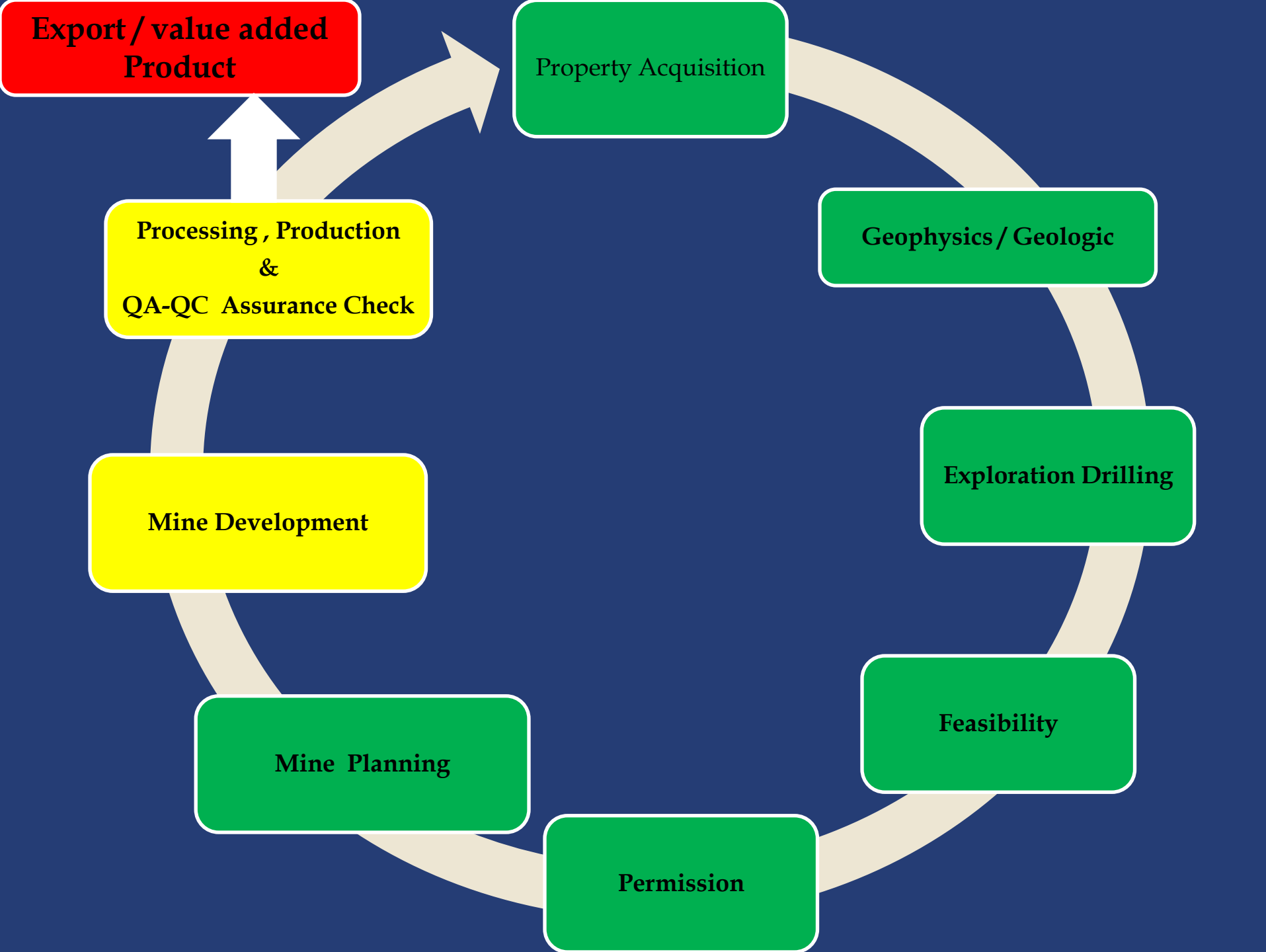
Exploration,
Research & Study

Feasibility Report &
Approval

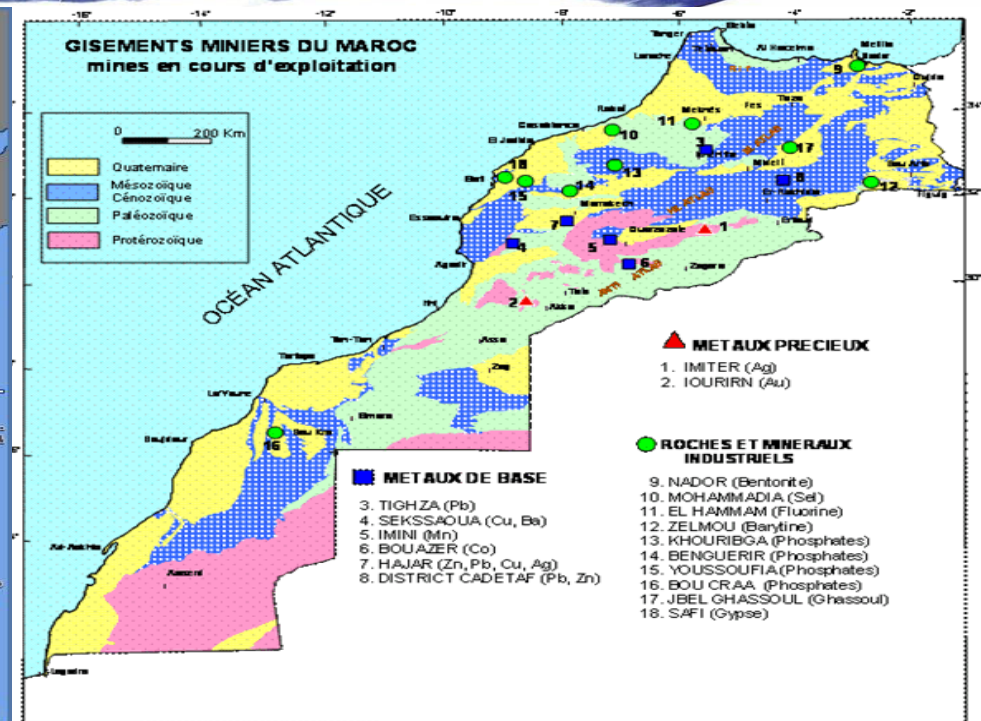
Mining Planning &
Development

Exportation /
Value Added
Product

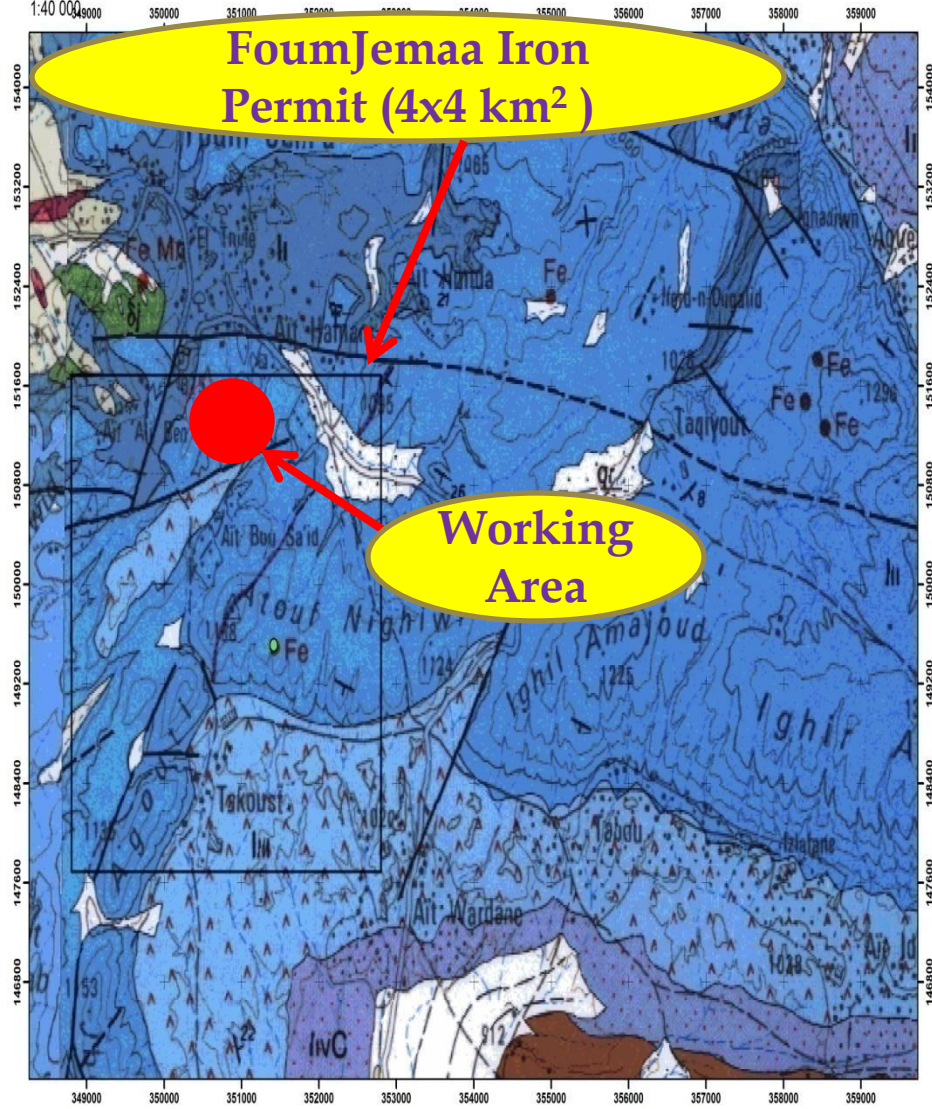




Geography & Demography

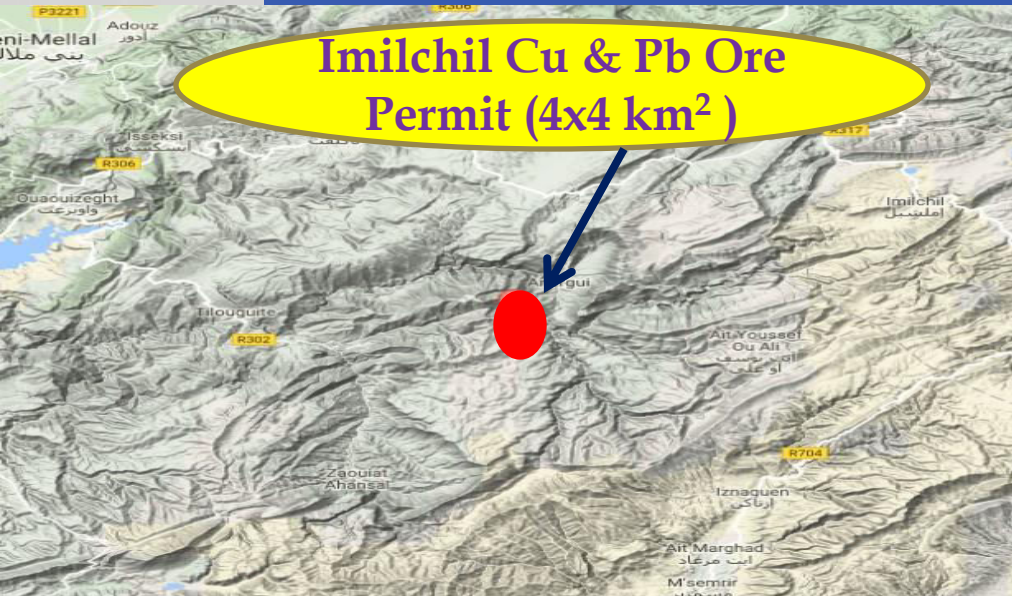


Location Maps.....



- Fougjema Iron Ore Permit covers an Surface area of 4 x 4 km²
- The Co-Ordinate of the Permit boundary are
 $X1 = N 31^{\circ}56'57.07''$; $W 06^{\circ}59'52.24''$
 $X2 = N 31^{\circ}56'59.03''$; $W 06^{\circ}57'19.94''$
 $X3 = N 31^{\circ}54'49.17''$; $W 06^{\circ}57'17.67''$
 $X4 = N 31^{\circ}54'47.21''$; $W 06^{\circ}59'49.91''$
- Presently the Mining work being commenced over an surface area of 16 Hc. , which is Identified as potential of Iron Ore.

Location Maps.....



Imilchil Cu & Pb Ore Permit (4x4 km²)

- **Ait-Ouanergue ,Imilchil** Copper & Lead Ore Permit covers an Surface area of 4 x 4 km² , with a pivot point co-ordinate of

N32⁰ 00'54.38" ; W 05⁰ 58' 15.52"

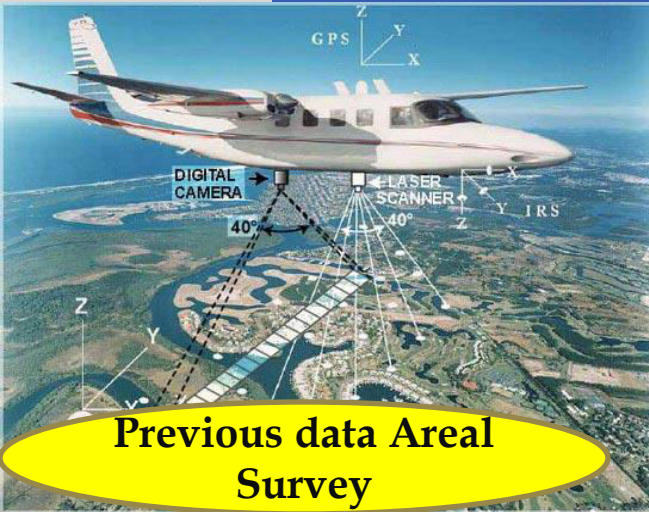


Keroul, Azilal Cu Ore Permit (4x4 km²)

- **Keroul , Azilal** Copper Ore Permit covers an Surface area of 4 x 4 km² , with a pivot point co-ordinate of N31⁰ 44' 04.89" ; W 06⁰ 50' 00.07"

- Both the area being under Exploration and research phase by well trained Geologists of TMC , under the guidance of Experts.

Exploration Methods....



Previous data Areal Survey



Visual



Pitting & Trenching



R/C Drilling



Core Drilling

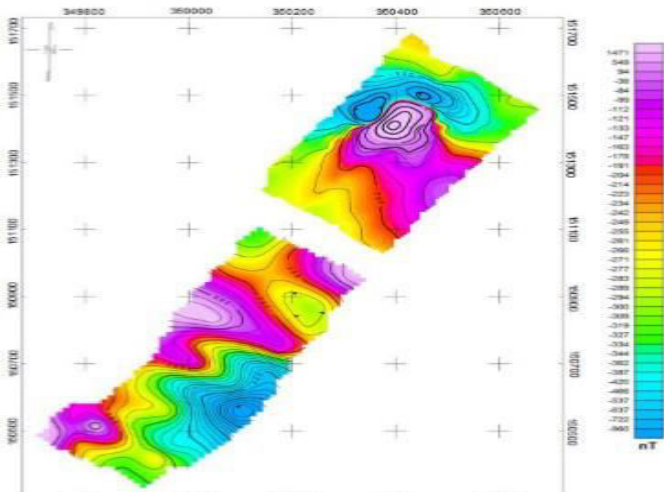


Field Survey



Resources & Reserve

Facts ..Resource & Reserve Foumjema Iron Ore



- TMC has approached a professional Moroccan based company GEOSMA to carry out the Geo-Physic in this Permit.
- The anomaly figure out in this Geo-physic study is turned encouraging and interesting .
- The Resource calculated by GEOSMA figured out 5,000,000 Tons with a dimension of ore body 400mt x 100mt x 50mt , dipping 70⁰ towards East .
- The Iron ore is magnetite in nature.

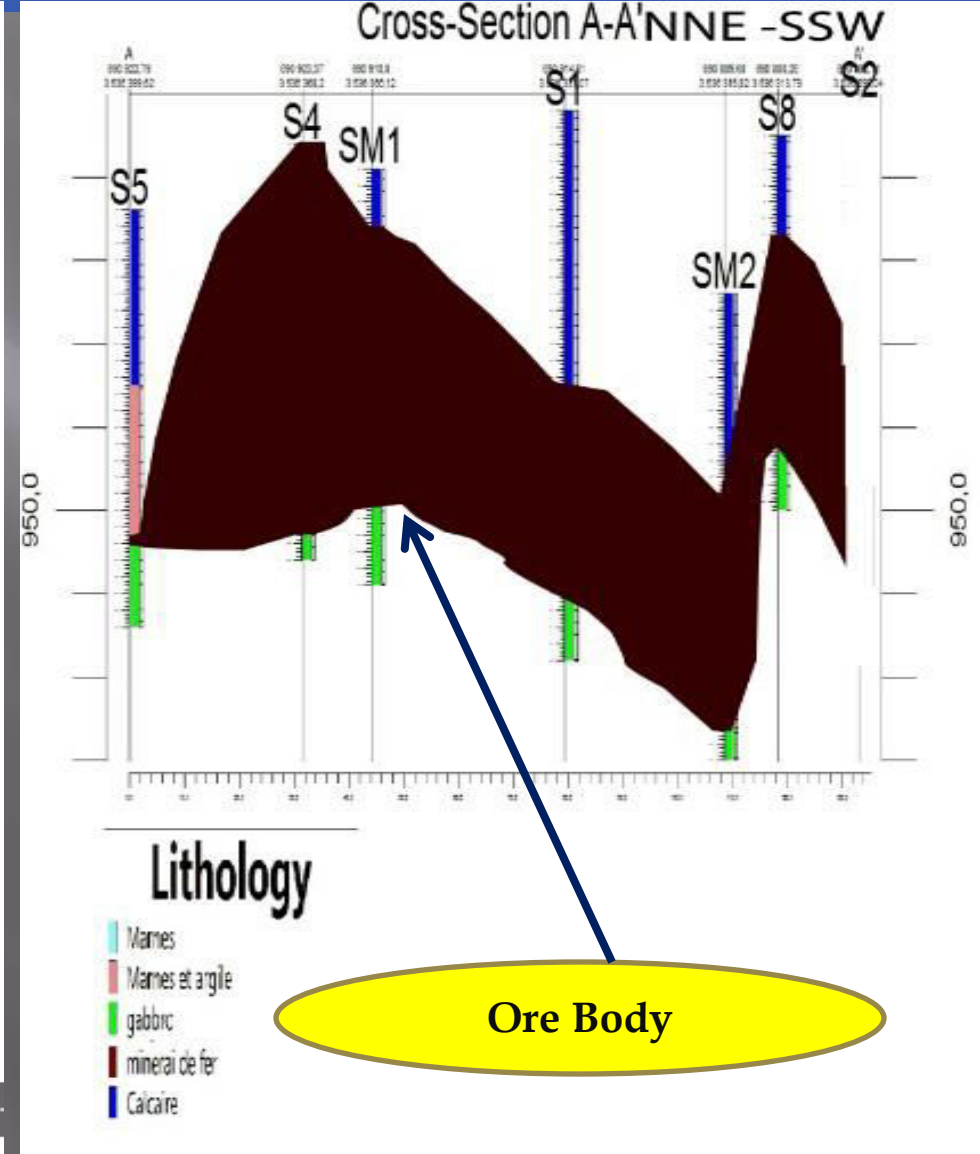
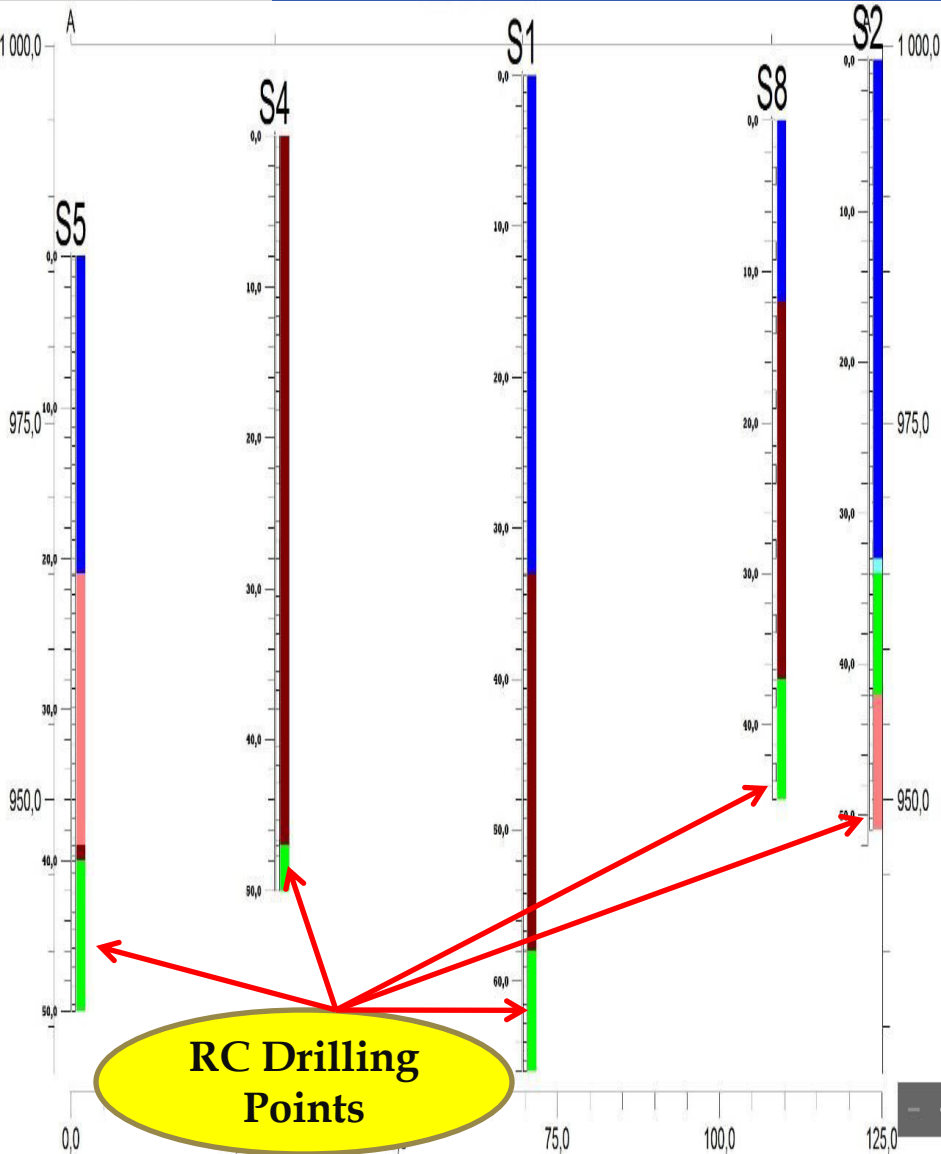


Facts ..Resource & Reserve Continued.....

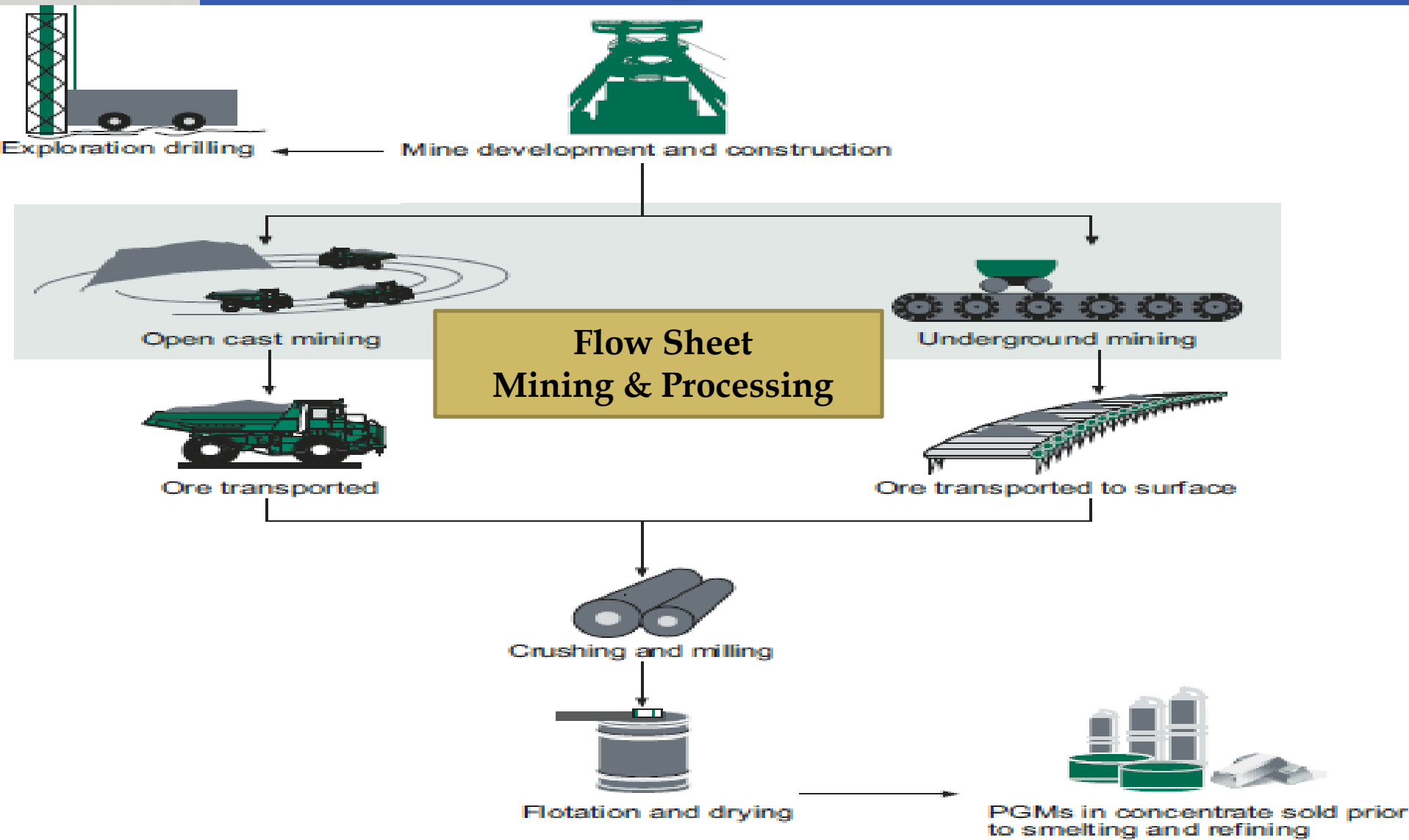


- Enthused with the result of GEOSMA , TMC has approached another professional Moroccan based company ADM to carry out the Exploration Drilling programme in this Permit.
- TMC itself also made some Trenching and Pitting in this Permit area
- In the presence of expert Geologists the RC drilling being carried out with a grate positive Results.
- The Reserve calculated by ADM figured out 5,00,000 Tons with a dimension of ore body 70mt x 60mt x 40mt , dipping 70° towards East , and agree with Resources of GEOSMA.
- The Quality of Ore varies from 42% Fe to 55 % Fe. & an average of 45%Fe.

Facts ..Resource & Reserve Continued.....



Mining Methods & Processing Flow-Sheet.....



Continued...



Mine Site - Semi Mechanized Open-Pit



DTH Drilling



Blasting



Excavator / Tipper Combo



Jorf-Lasfer Port



Crushing /Screening Site



Logistic



QA-OC Test



ROM (0-600)mm

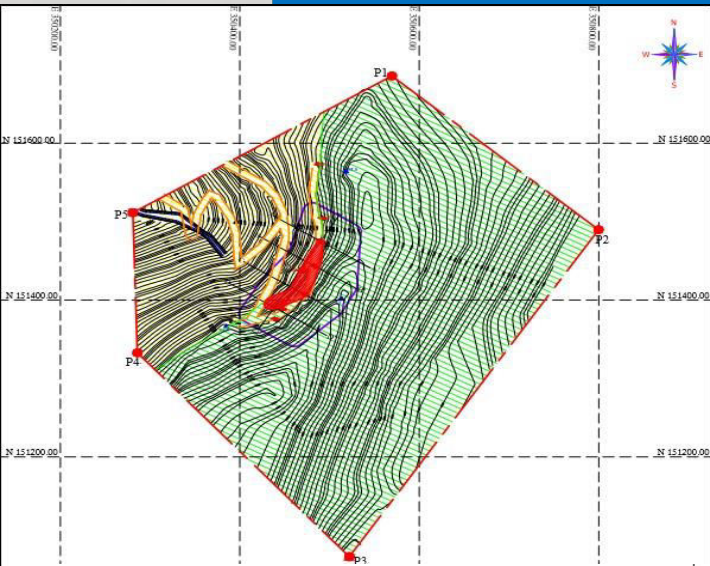


Calibrated Iron Ore(5-25)mm



Iron OreFines (0-5)mm

Mine Planning & Designing



GPS CO-ORDINATES OF CORNER POINTS.

Corner Pillar No.	EASTING	NORTHING
P1	350569.47	151685.73
P2	350799.74	151489.71
P3	350522.03	151072.86
P4	350285.87	151332.76
P5	350280.70	151511.48

INDEX

LEASE BOUNDARY	WORKING BENCHES
CONTOURS	ROAD
IRON ORE ZONE	BORE HOLE DRILLED
SHALE / PHYLLITE	DOLOMITIC LIMESTONE
ULTIMATE PIT LIMIT	

- TMC has planned proper Mining plan keeping view to all the Mining , Environment and Labour laws enforced in the Kingdom of Morocco.

FOUM JEEMA IRON ORE MINE OF M/s. TIRUPATI MINING CORPORATION s.a.r.l.

Title SURFACE GEOLOGICAL PLAN
Scale 1:4000 RF Extent: 44.47 Acres (19.00Ha.)

Certified that the above plan is correct and the plan is submitted by M/s. TMC.



INDEX

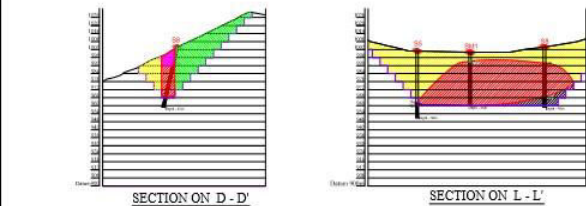
BORE HOLE DRILLED	
DOLOMITIC LIMESTONE	
IRON ORE ZONE	
SHALE / PHYLLITE	
GABBROS	
EXCAVATED AREA	
ULTIMATE PIT LIMIT	

- TMC hired well qualified , trained and experienced mining professionals and consultants to design the proper mining planning.

FOUM JEEMA IRON ORE MINE OF M/s. TIRUPATI MINING CORPORATION s.a.r.l.

Title GEOLOGICAL CROSS SECTION
Scale 1:2000 RF Extent: 44.47 Acres (19.00Ha.)

Certified that the above sections are correct and the plan is submitted by M/s. TMC.



Mining Site Ground Reality.....



- The Planning has been implemented in the ground effectively
- The well trained Engineers ,Technicians , Operators with the skilled labours are employed to execute the mine plan in the ground.
- The Experienced Mining personal and the Experts has been engaged to carryout the Mining operation keeping view to safety and productivity.
- The Operation is continued in combination of Local people and the Mining Experts.

Mine Site Ground Reality Continued....

- Total Permit Area : **16 Square Kilometer**
- Surface Right area for Mining : **18 Hector .**
- The Mining activity carried over the Government land and the required permission has been taken from the Ministry of Land and Rural development authority.
- The Environment clearance has been taken from Ministry of Environment and Transport to start Mining activity.
- Mineralization of Iron Ore has been identified approximately 35mt. below the ground strata bounded between Dolomitic Lime stone Lias. **Calcite , dolomite stones** are also found as well in the form of capping .
- This is well suited for the **Low cost Open-Pit Mining.**
- Mostly the area is dry **waste land** with pockets of **agricultural activities** which is **seasonal** and happens around the rainy season.
- The area is covered with limited flora , Fauna , & a well established human habitation just 3km away from the mine site.
- Irrigation is almost non-existent.
- Vegetation is also seasonal.



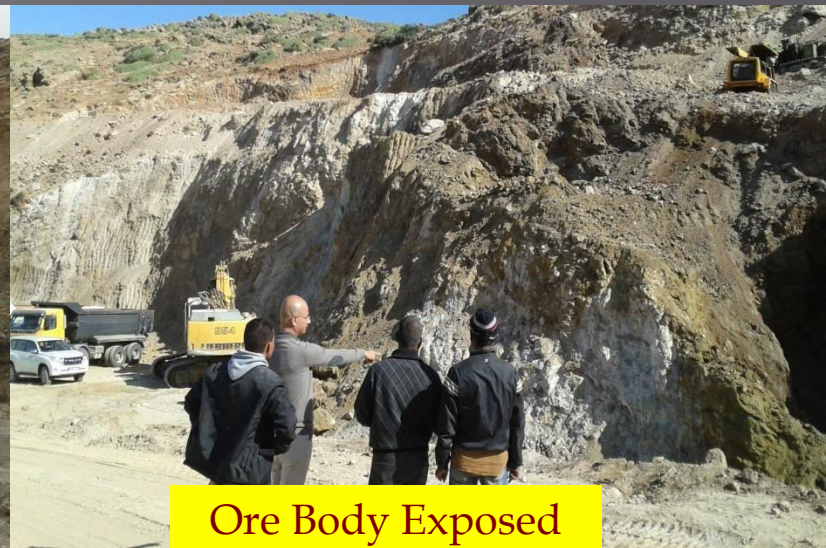
Mine Site Ground Reality Continued.....

- **No displacement of human habitat** is required / envisaged for mining activity.
- The area has a **well connected network of roads** with National highway (N8) connecting Marrakech- Benimelal via Bzou at one way and a Regional highway (R210-R304) Connecting Marrakech -Azilal on the other way via Tanant . The Foumjema is situated 15km from either side connecting through a Regional highway (R307) from Bzou and Tanant.
- It also has **rail and air** connectivity. Nearest Railway station and , air strip at Marrakech about 140km away.
The international Airport is in Casablanca approximately 250km away.
- There is no metropolitan area, National Park , Historical Monuments or Wildlife Sanctuary within 15KM of proposed mine site.

Mine Site Ground Reality Continued.....



View Points _Mine Design on Ground



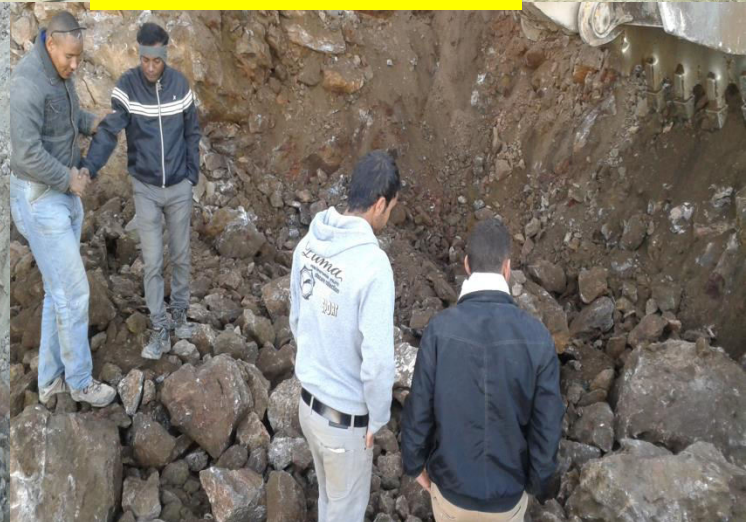
Ore Body Exposed



Working DTH

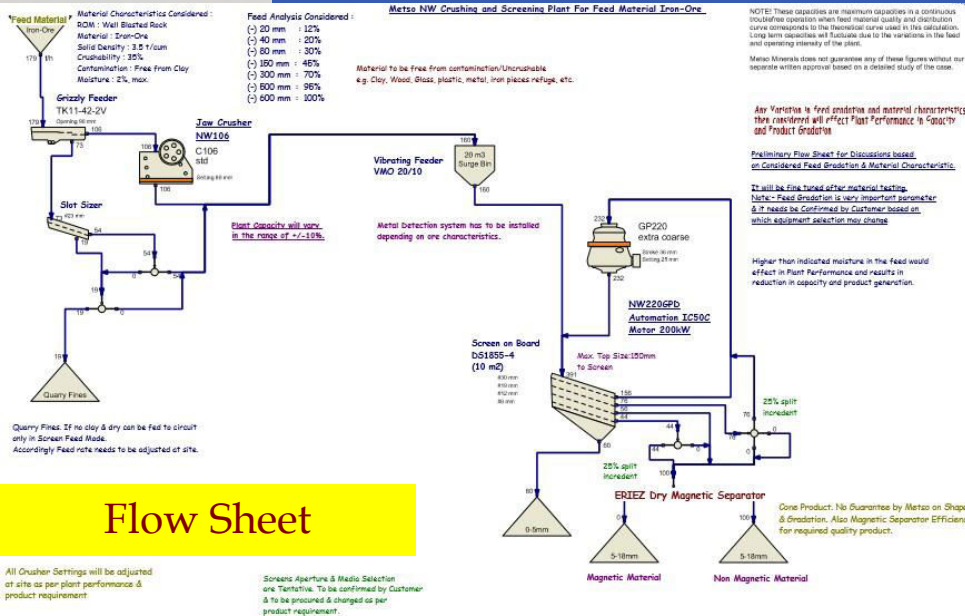


Exv.- Dumper Combo



Visual Checking Ore by Engineer

Processing Unit



- TMC has designed the flow sheet diagram in order to crush the mine product to marketable product.
- TMC set up a highly productivity (200 TPH) crushing screening unit comprise of (Jaw-Cone-Screen) to get the marketable product.
- The crusher also equipped with Magnetic separator to eliminate the contaminated ore.
- TMC hired well qualified , trained and experienced national professionals and to run the plant successfully.
- TMC Produced calibrated Iron ore of size (0-5)mm, (5-25)mm and (10-35)mm



Set up Crushing & Beneficiation Plant & Staffs

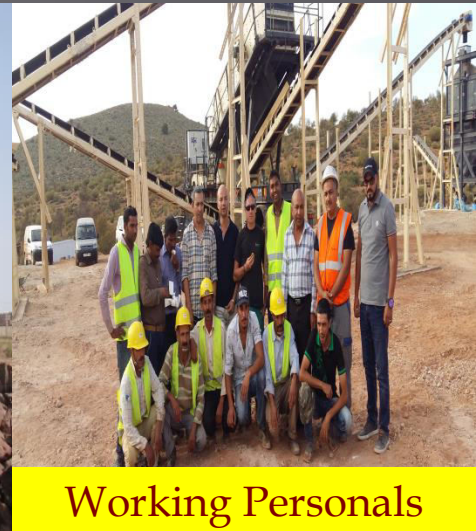
Processing Unit Ground Reality



Integrated Crushing Unit



Loading & Feeding



Working Personals



ROM (0-600)mm



Calibrated Iron Ore(5-25)mm

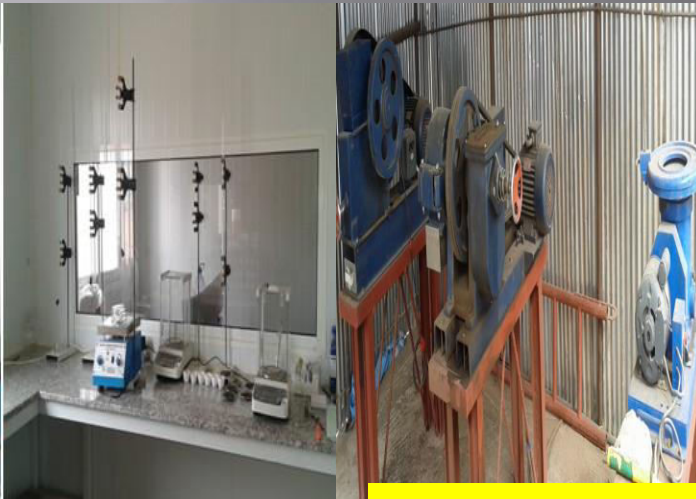


Iron Ore Fines (0-5)mm

QA-QC Assurance



Chemical Lab.



Physical Lab.



Sample Collection



Wet Chem. Test

- Quality Control and quality assurance is the prime & priority for TMC.
- TMC setup a high standard Laboratory equipped with advance technology equipments to challenge any dispute on quality.
- TMC has setup both Physical & Chemical Laboratory.
- Well trained and well qualified personals working in the Laboratory.
- To ensure the quality TMC draw the samples at every steps and every points of activity.

Safety & Security Policy....

Super Safety tm
(800) 275-8239



As a good corporate citizen, TMC is committed to Safety & Health of its employees and concerned persons who may directly or, indirectly , affected by its operation.

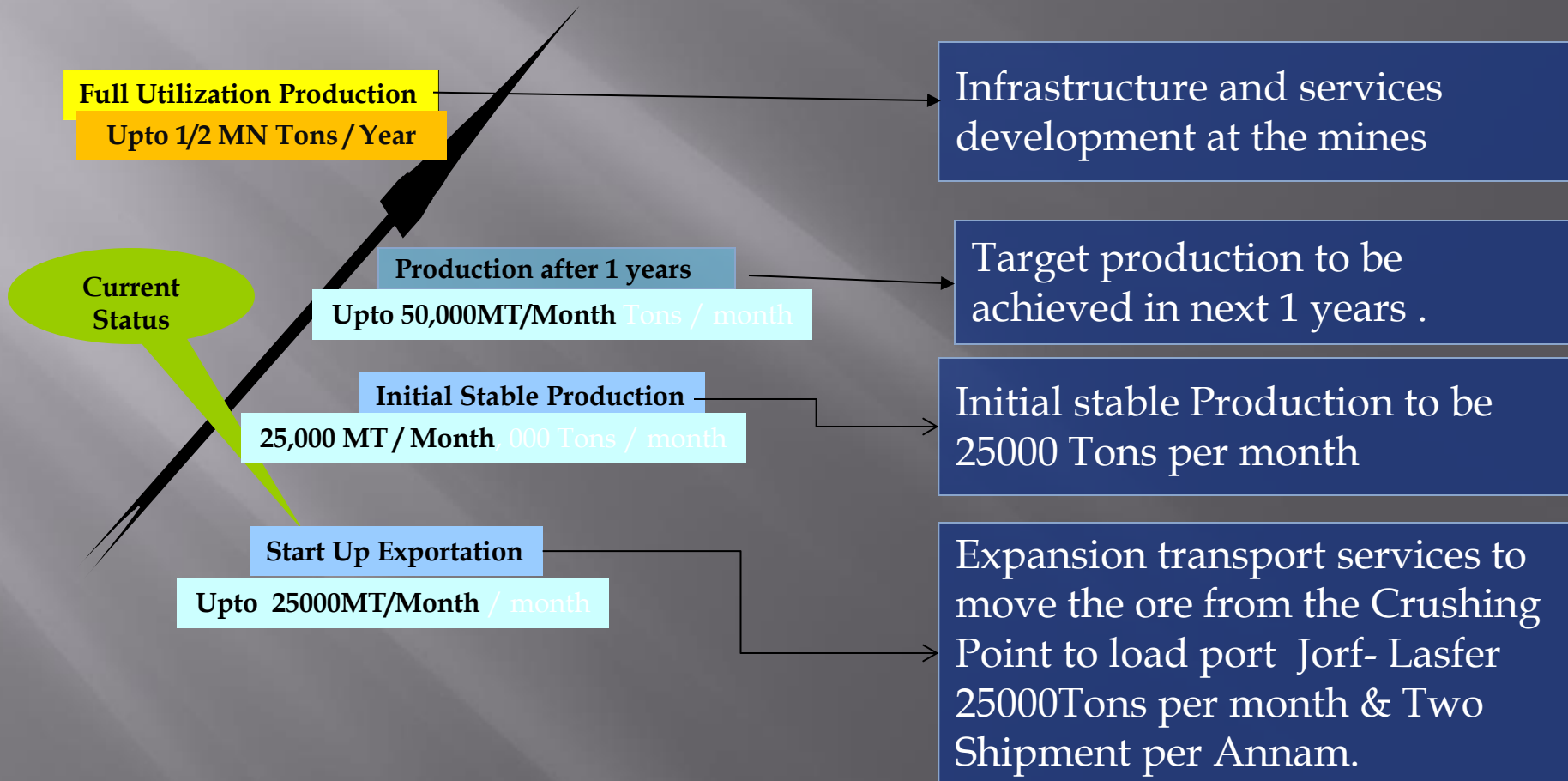
- ❖ To achieve this commitment, it is our policy to:
 - Integrate Safety & Health measures in all our activities.
 - Comply with all applicable legal and other requirements to which the Organization subscribes
 - Promote Safety & Health awareness amongst employees, suppliers and contractors, customers and dealers.
 - Continually improve the Safety performance through precautions besides participation and training of all employees.

Fact & Figures

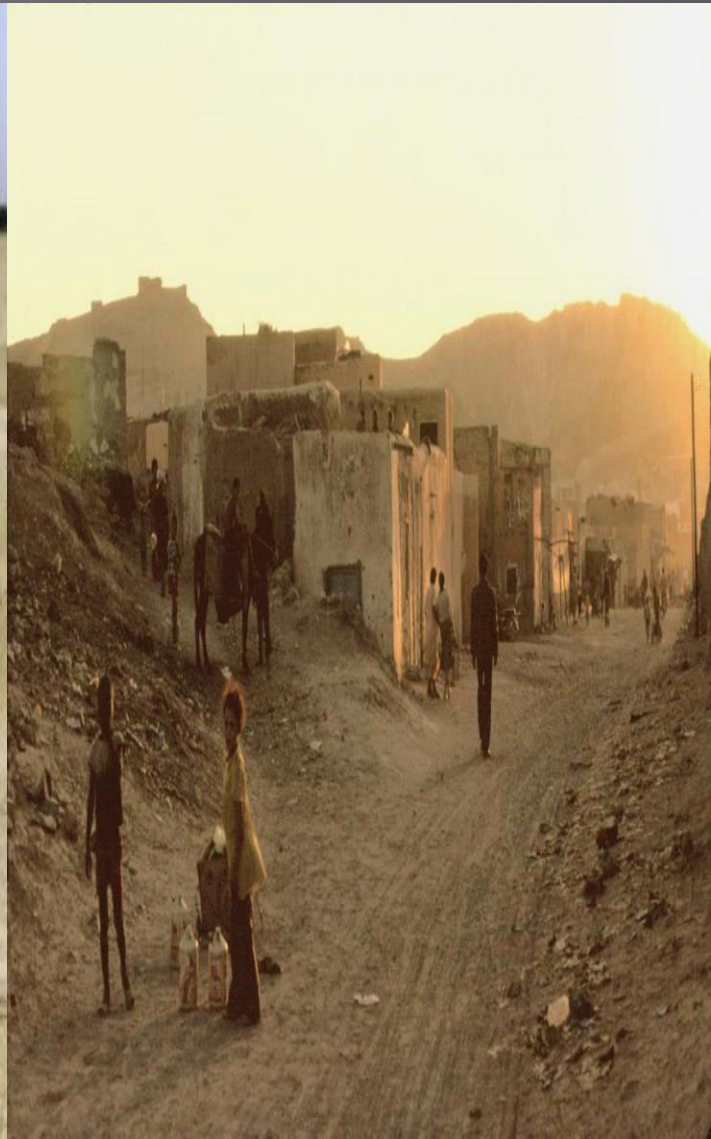
- Total Land Allotted : 16 sq. km.
- Land under use : 18 Hc. (Approx.)
- Proved Reserve : 5,00,000 Tons
- Projected Resources : **5.0 MN Tons**
- Type of Ore : Magnetic Iron Ore
- Ore Structure : Lenticular , Strata bound
- Recovery Percentage : About 80%
- Current Production : 25,000 Tons / month
- Targeted Production : 50,000 Tons/month
- Quantity Shipped , Metallurgical Test : 500 Tons

This figure of Projected Resources need for detailed Exploration

Targeted Production....



Social Impact...



Citizen Welfare

- Creation of employment opportunities and development of skills.
- With the direct **employment**, thousands of people living in and around the mining area will get indirect employment and hence enhance the living standard.
- Setting up good Education Institution , Health Centre , Water supplying & connectivity Roads.
- Overall **up-liftment** of communities in the vicinity.

Environmental Impact



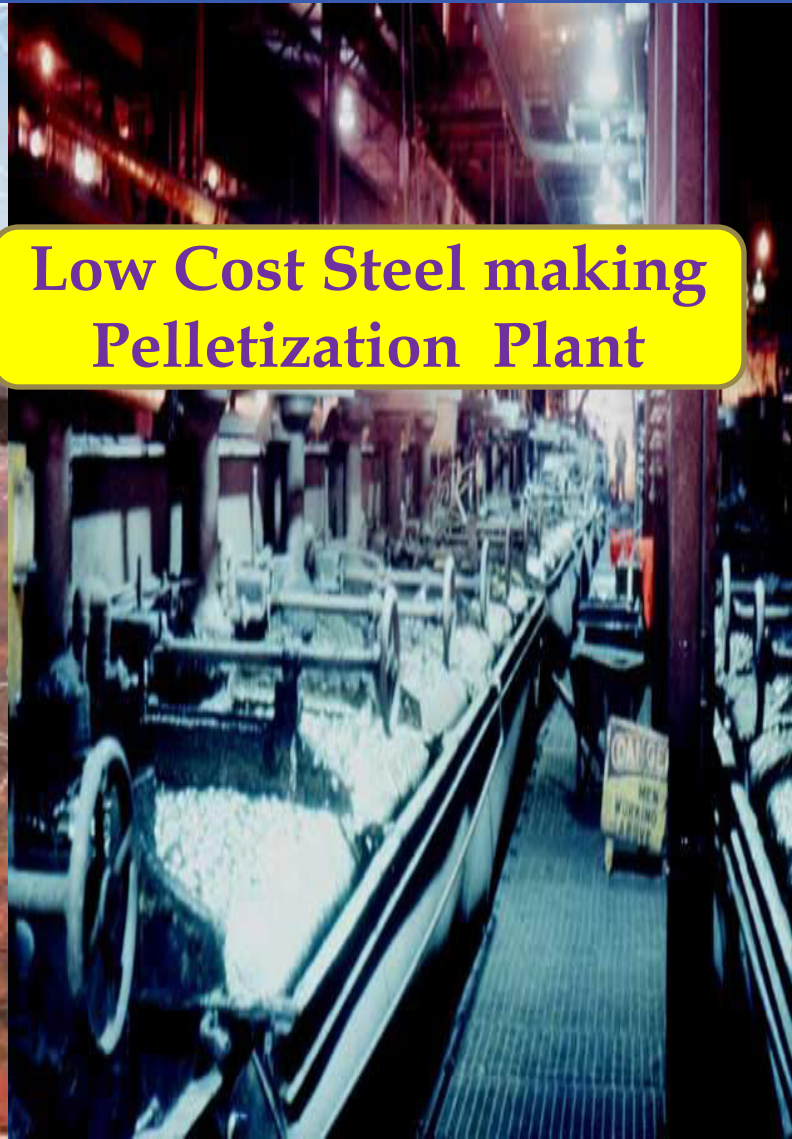
- The environmental impact of the project is **fairly minimum** essentially because of the following:
 - **No Deep-Hole drilling & instantaneous Blasting techniques** to be adopted & **controlled Blasting** techniques adopted with delay to avoid Noise & vibration.
 - **Minimum** land excavation and degradation.
 - **Carbons** and **Nitrogen** related **pollutants are minimum** because of high efficiency eco friendly machine usage.
 - Stage Dumping and Parapet wall to be constructed.
 - The mine area is **mostly dry, waste land** with limited flora, fauna and human habitation.

Way Forward.....



- We look at identifying and forming potential **partnerships** with suitable investors.
- We are sitting at a helm of an **explosive growth** and look forward to bring on board more investors in order to give **depth and width** to our team in terms of **experience, skill set and knowledge base**.
- The fact that we are growing both in number of people and number of offices across the globe shows our commitment to our partners.

Future Vision....

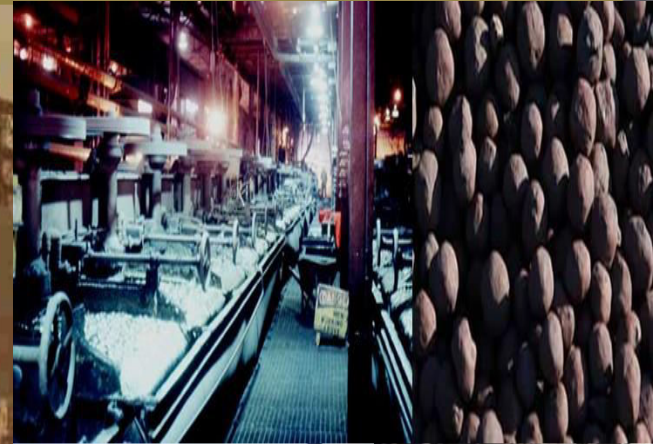
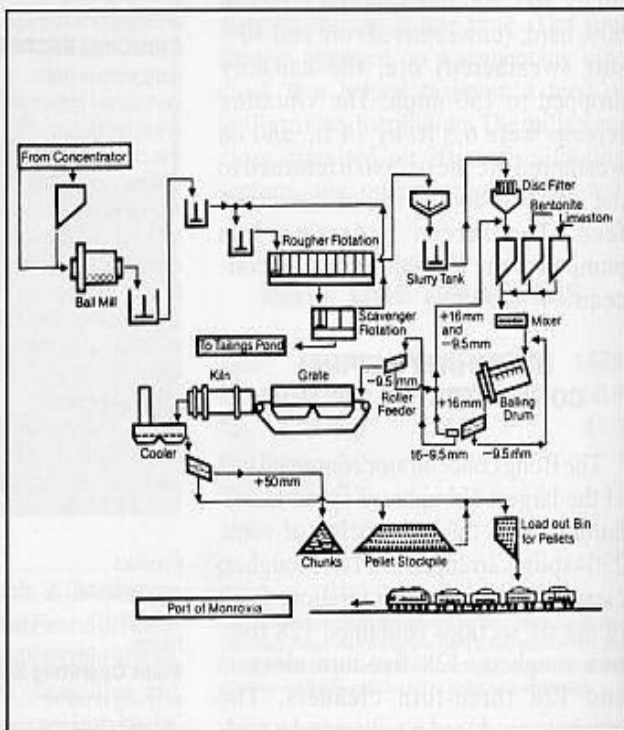


**Low Cost Steel making
Pelletization Plant**

Future Vision Continued.....

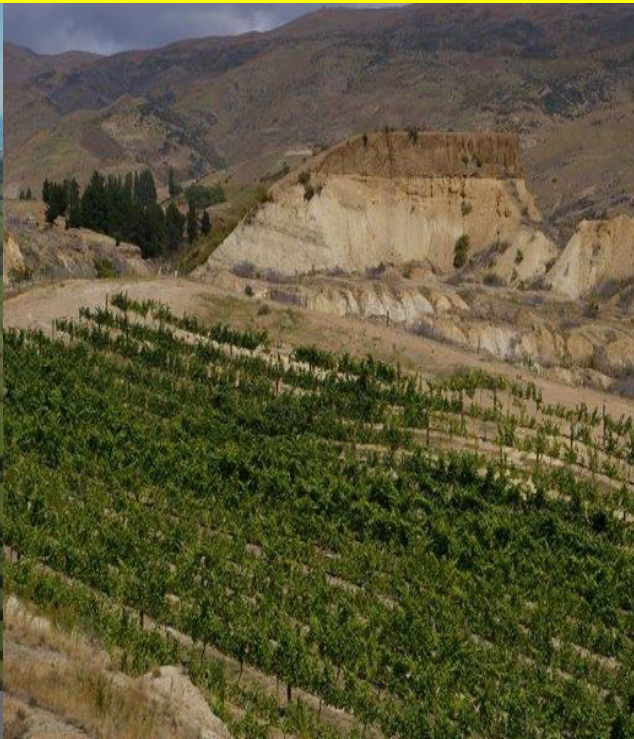
Continuing being a Pioneer in Mining industry, TMC Proudly Announces , to setup the foundation of a Fully Integrated Power & Pelletized Steel plant in Morocco creating about 5000 direct & indirect employment in the State.

ULTIMATE PELLET PLANT FLOWSHEET



Post Mining & End Result.....

- **Creating Eco-Friendly Environment.**
- **Creating Green Belt in & around.**
- **Creating alternative Job opportunity.**
- **Proper gradation of Mining land.**
- **Viable for Agriculture.**
- **Viable for Tourist place.**
- **Enhanced Living Culture & Style**
- **Wealth & Heavenly peace.**





Sincerely.....

TMC TEAM